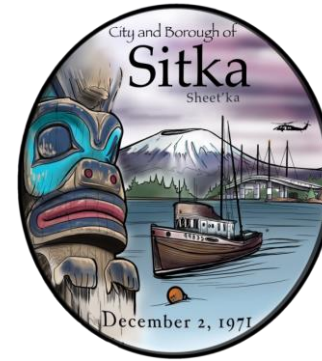


CITY AND BOROUGH OF SITKA

# New Sitka Seaplane Base



## Design & Permitting

### Pilot Group Discussion

Sitka, Alaska

Wednesday, May 4, 2022

# Agenda

1 Welcome/Project Team Introductions

2 Project Overview

3 Address Questionnaire

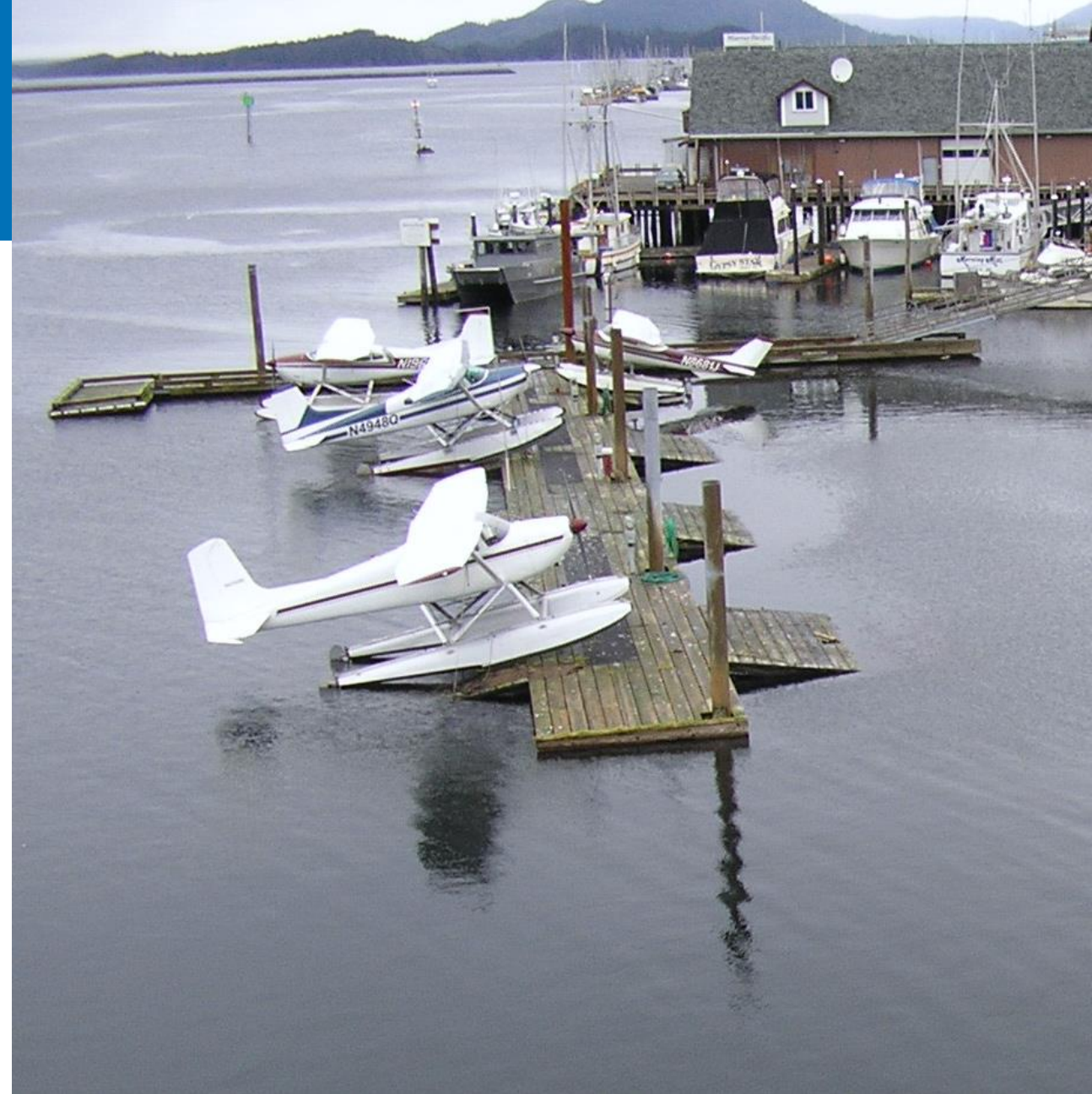


# Project Team & Roles

**City and Borough of Sitka:** | *Airport Sponsor*

## **DOWL Team**

- DOWL | *Upland Design*
- PND | *Marine Design*
- Morris Electrical Group | *Electrical Design*
- Catherine Fritz | *Architect*



# Project Overview





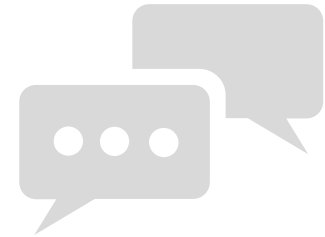
# Environmental Assessment Concept



# What We Need From You

## QUESTIONNAIRE:

1. Security/Fence Location.
2. Design Vehicle for the dock.
3. Vehicle Circulation.
4. Time of Operation.
5. Potable Water.
6. Power.
7. Lighting.
8. Tie Downs.
9. Transient Float Layout
10. Fueling

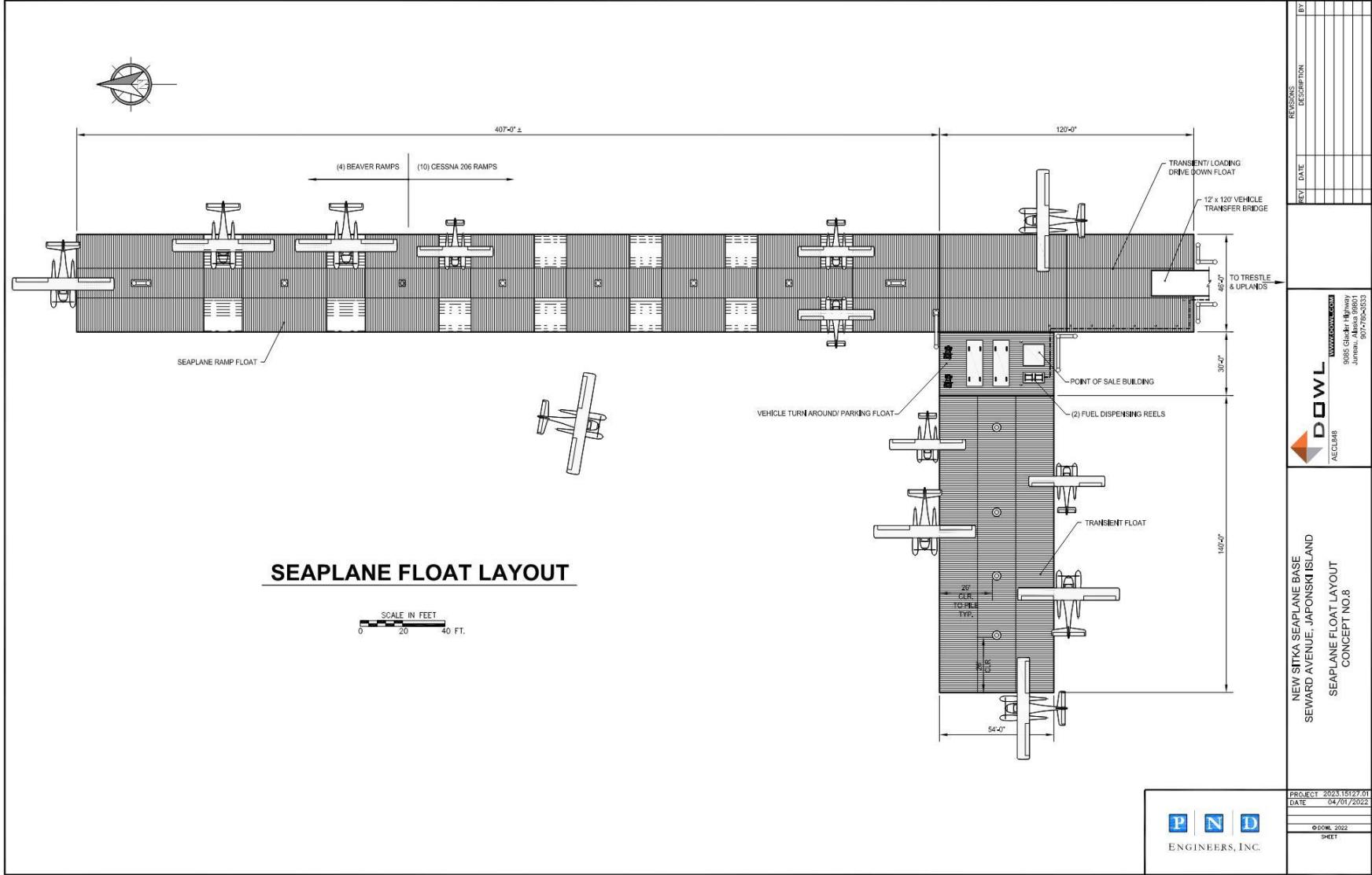




# Overall Site

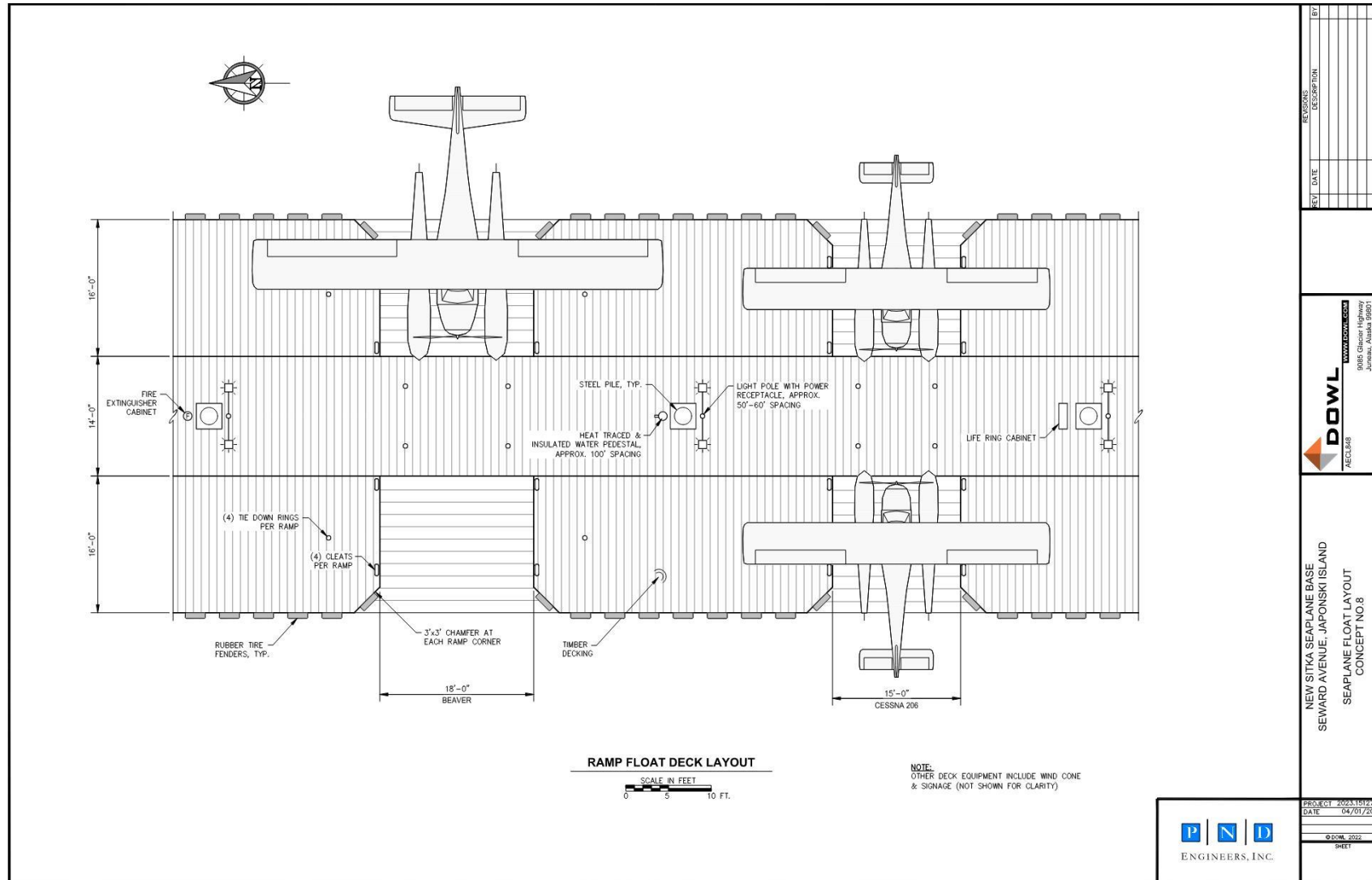


# Marine Elements

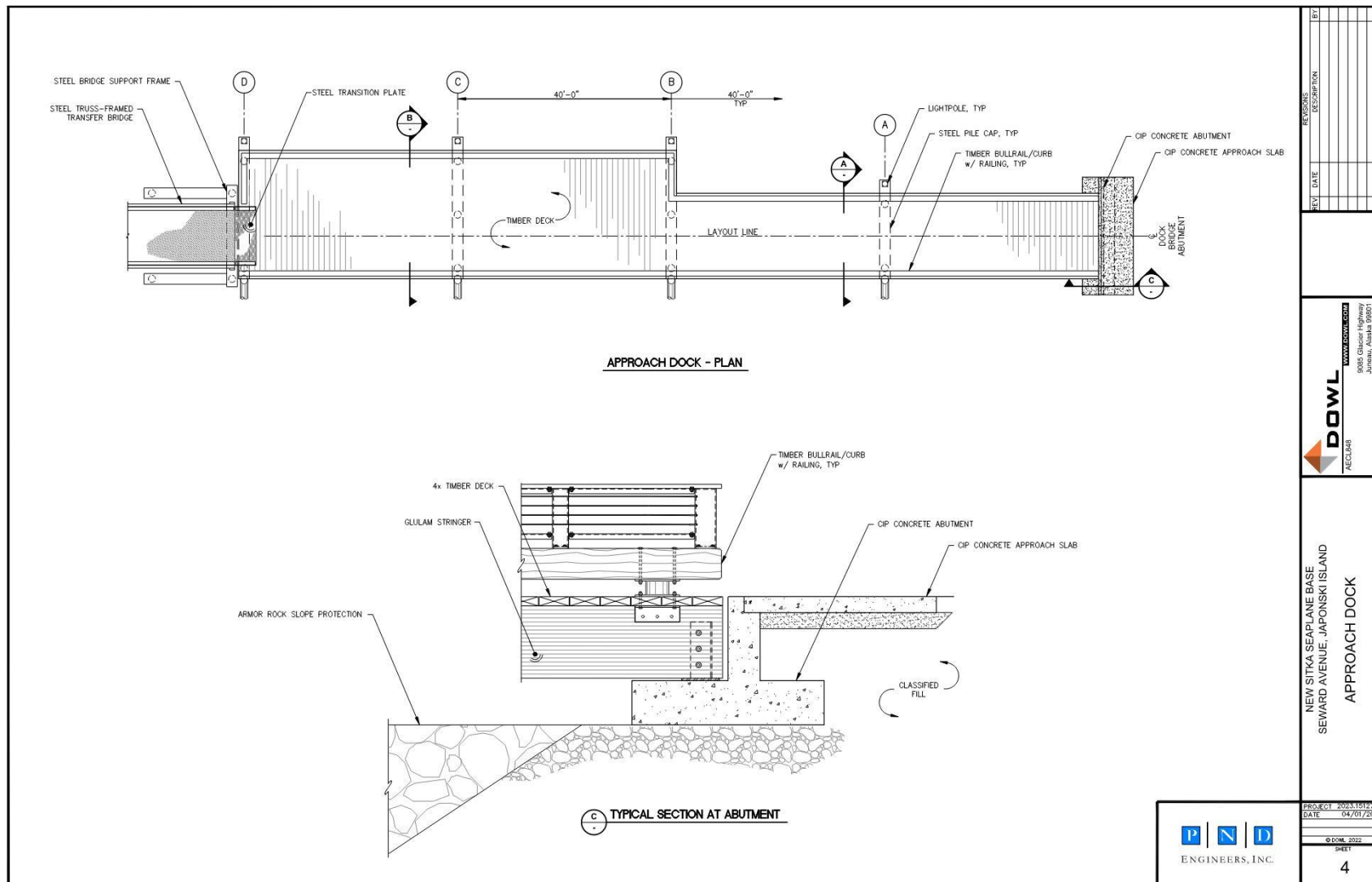




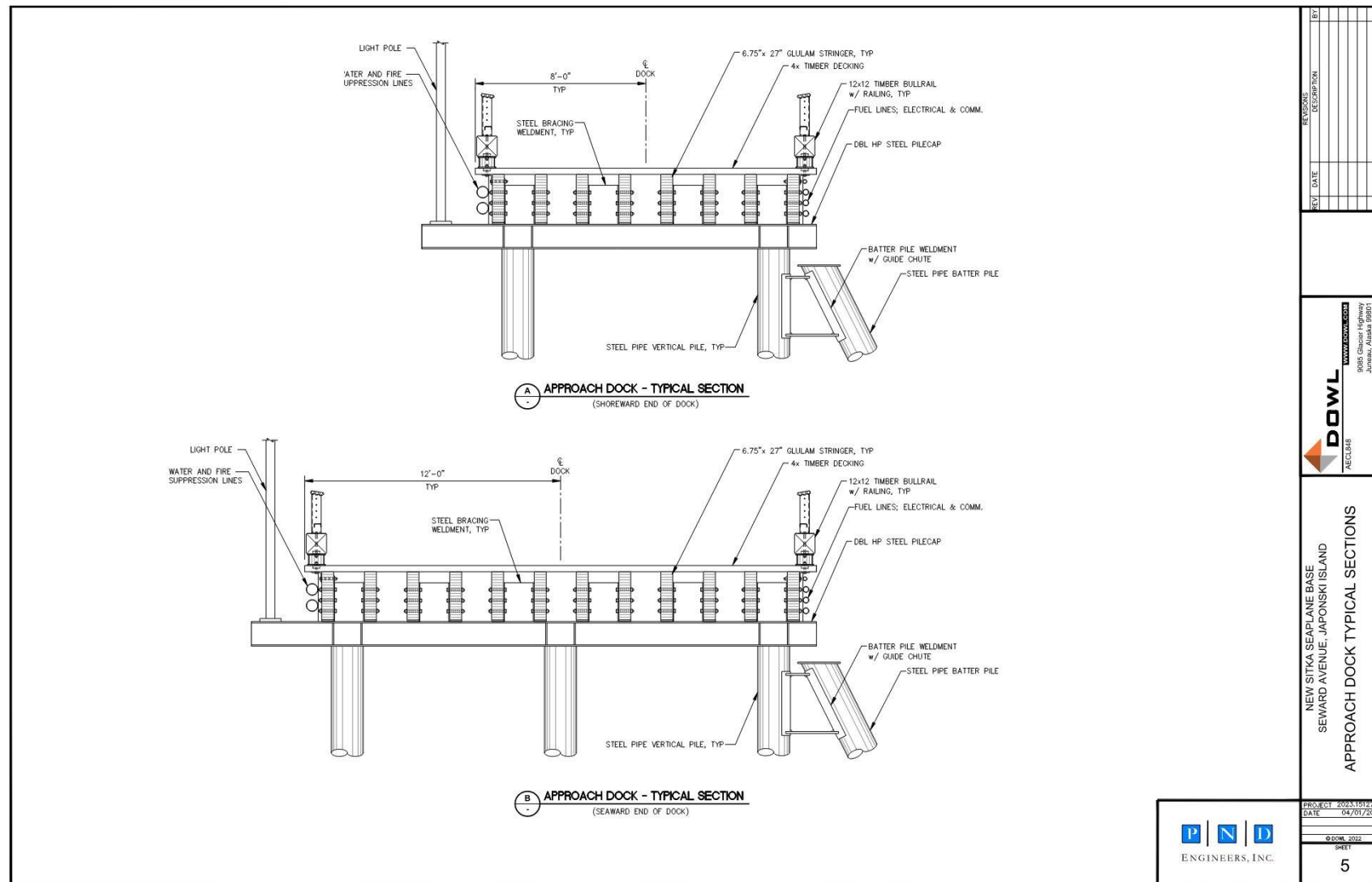
# Marine Elements



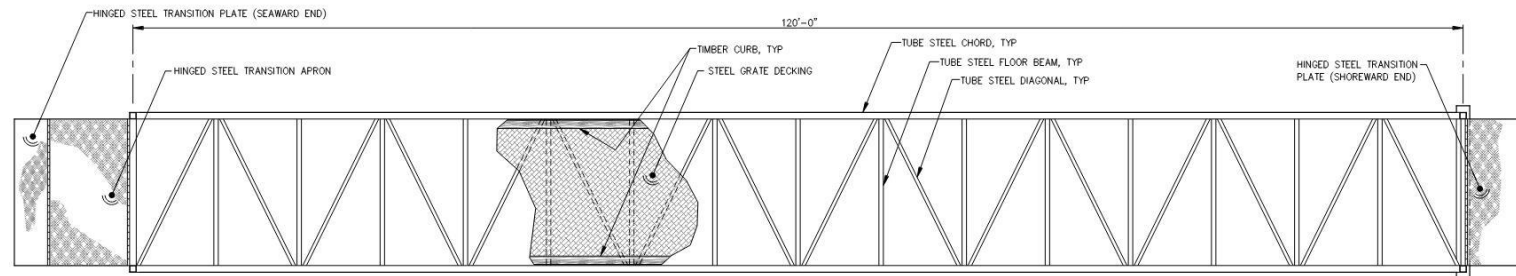
# Marine Elements



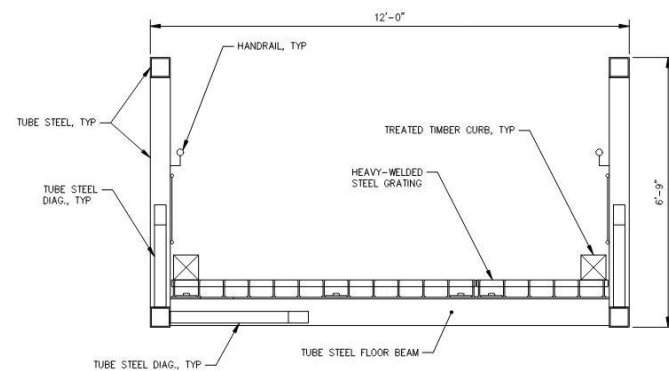
# Marine Elements



# Marine Elements



TRANSFER BRIDGE - PLAN



TYPICAL SECTION

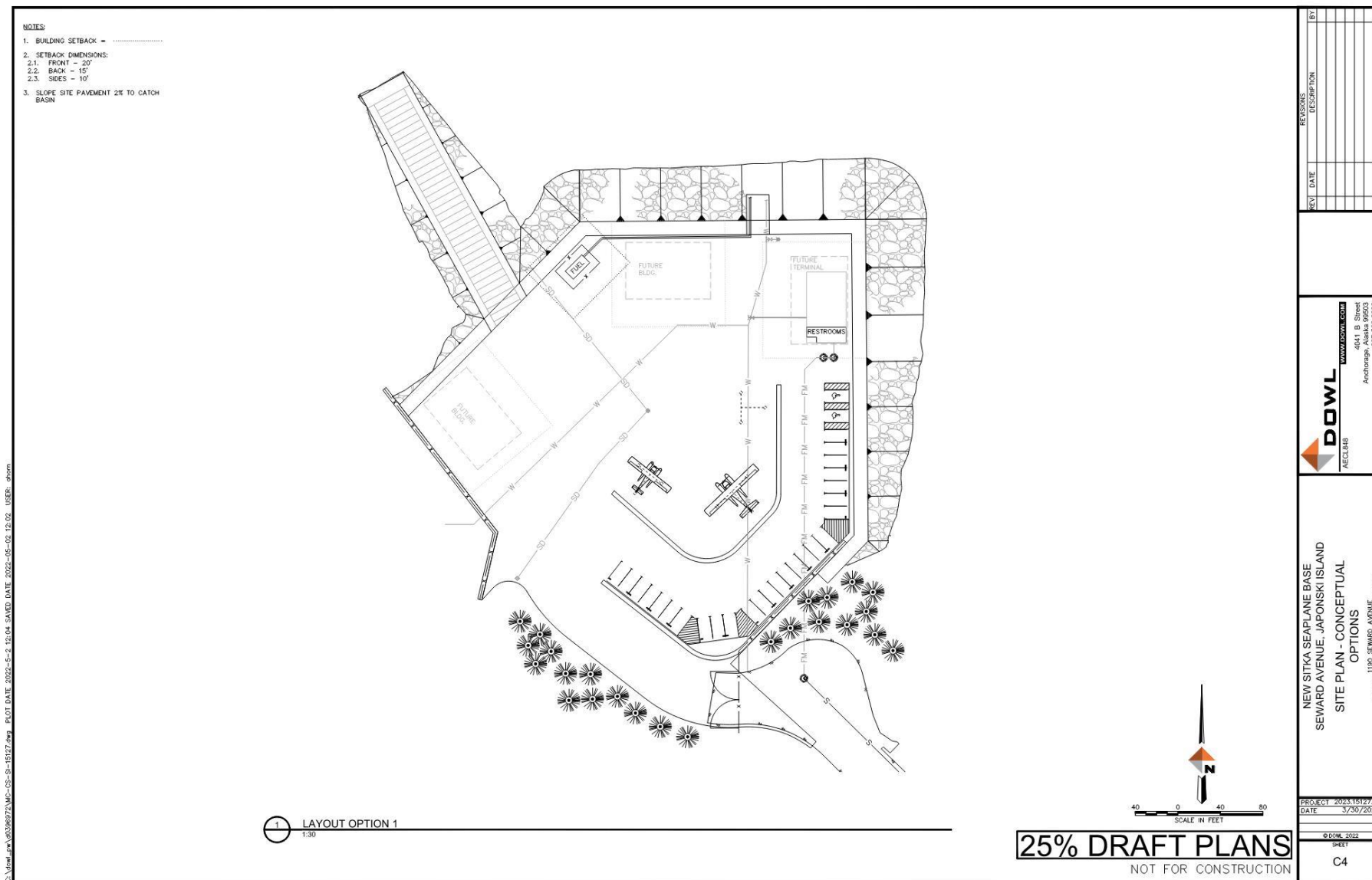
[illegible]

NEW SITKA SEAPLANE BASE  
SEWARD AVENUE, JAPONSKI ISLAND  
TRANSFER BRIDGE

PROJECT	2023.1512
DATE	04/01/20
© DOWL 2022	
SHEET	
6	



# Site Elements



## 14



# Architectural Elements

- Covered Areas (for both people and baggage/freight)



Pre-manufactured, modular.



Custom designed/built.



Covered area integrated with building.



# Architectural Elements

- Restrooms as stand-alone facility.



Two unisex toilet rooms; mechanical in center.



Four unisex restrooms; mechanical/storage.



# Architectural Elements

- Combine Covered Waiting Areas and Restrooms into 1 building: small terminal.



Port Office, Juneau Dock.



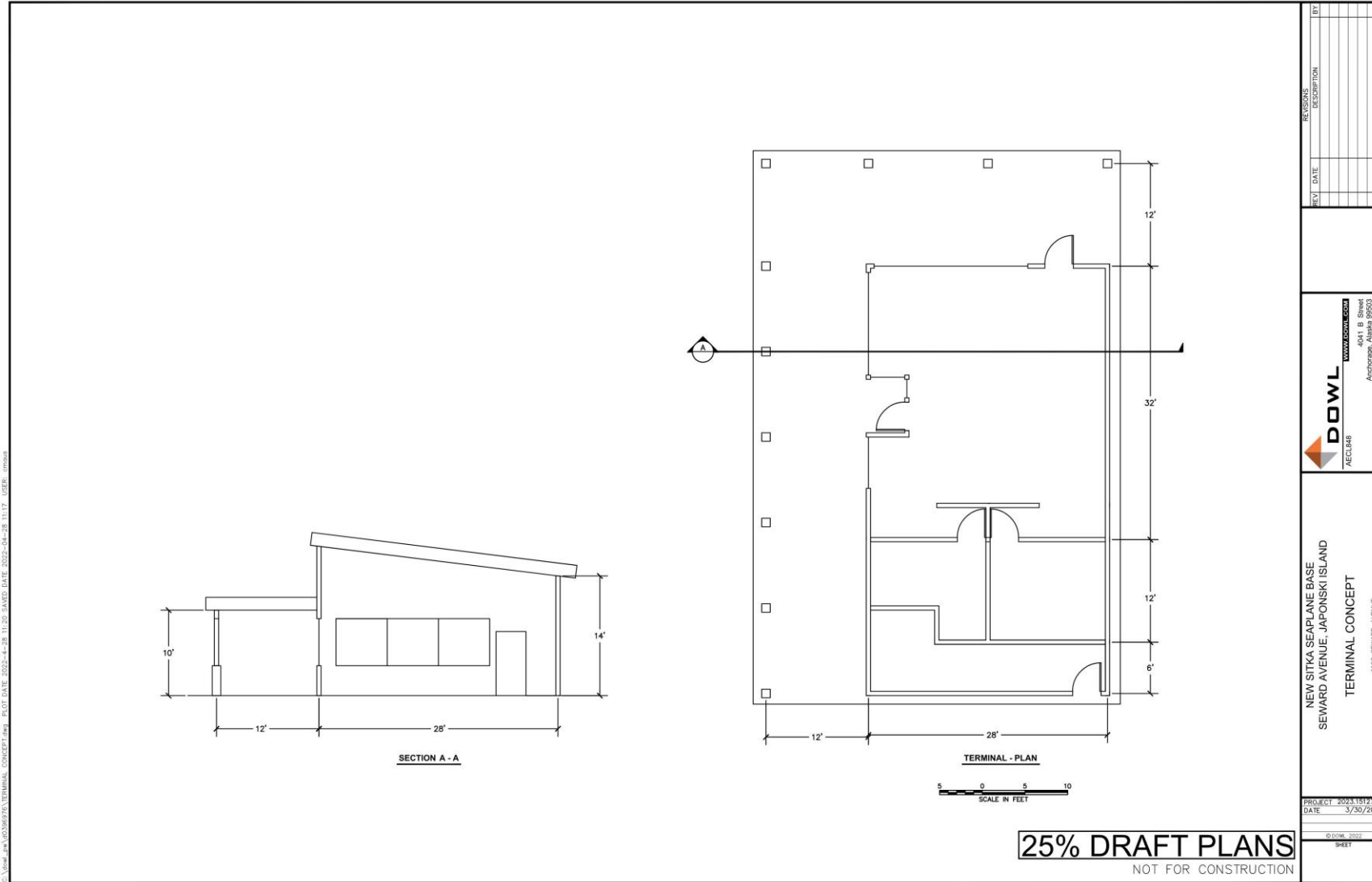
Downtown Transit Center, Juneau:  
Restrooms, indoor waiting area.

# Architectural Elements

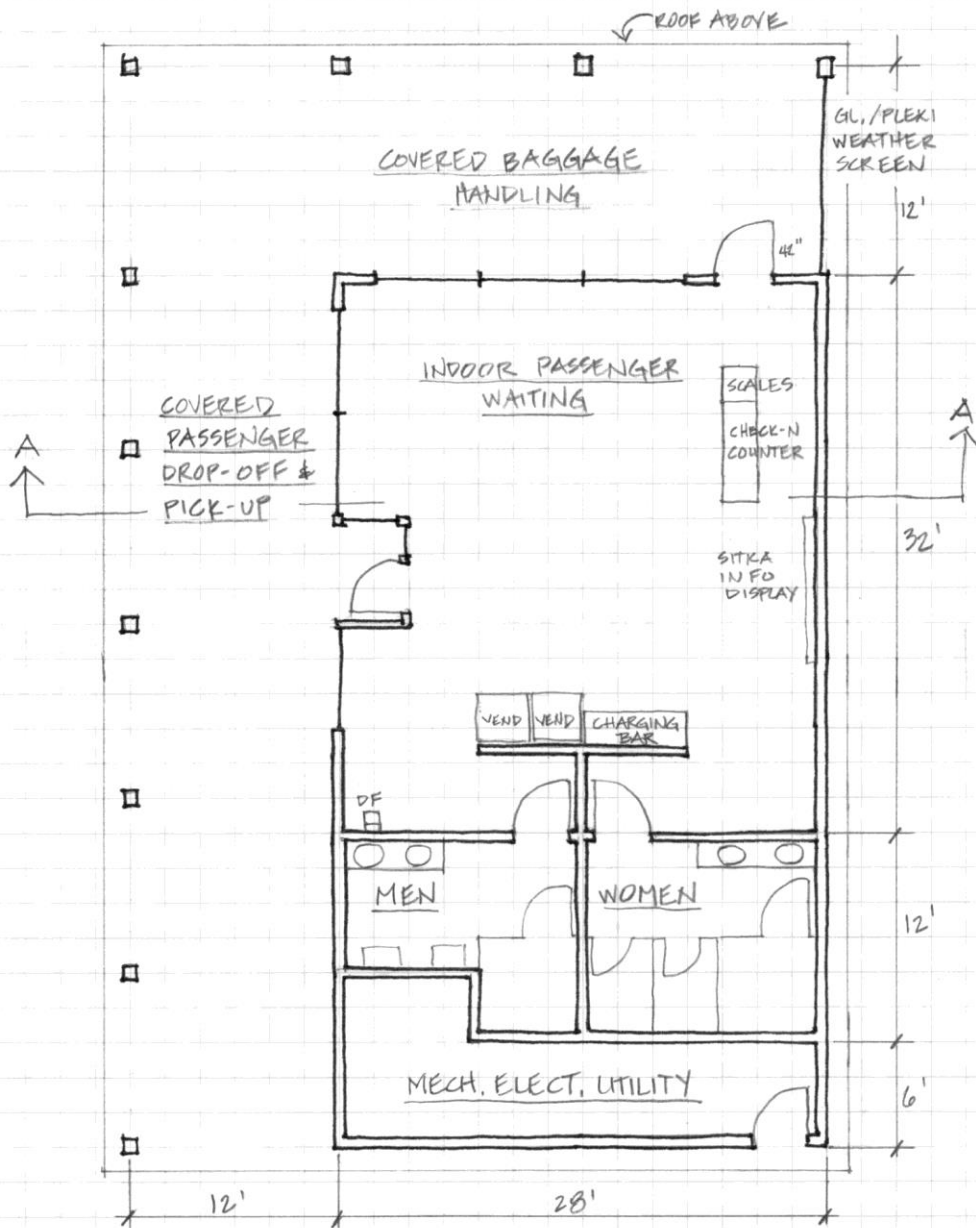
## ■ Architectural Program (space allocation).

SPACE ALLOCATION		gross area in Sq. ft.	TOTAL AREA
Women's Restroom		126	
Men's Restroom		126	
Family (Unisex) Restroom		84	
	Sub Total		336
Outdoor Waiting Shelter			
vehicle pull up		480	
baggage staging/off-loading		600	
	Sub Total		1080
Terminal Indoor Waiting Area			
lounge chair seating		300	
table seating		300	
laptop charging station bar		17	
fixed seats for laptop bar		11	
visitor info display		11	
airline service counter		38	
trash cans		7	
vending machines		7	
Women's Restroom		117	
Men's Restroom		117	
Terminal Mechanical		96	
Terminal Support (lift station, etc)		120	
	Sub Total		1140
FACILITY TOTAL			2556

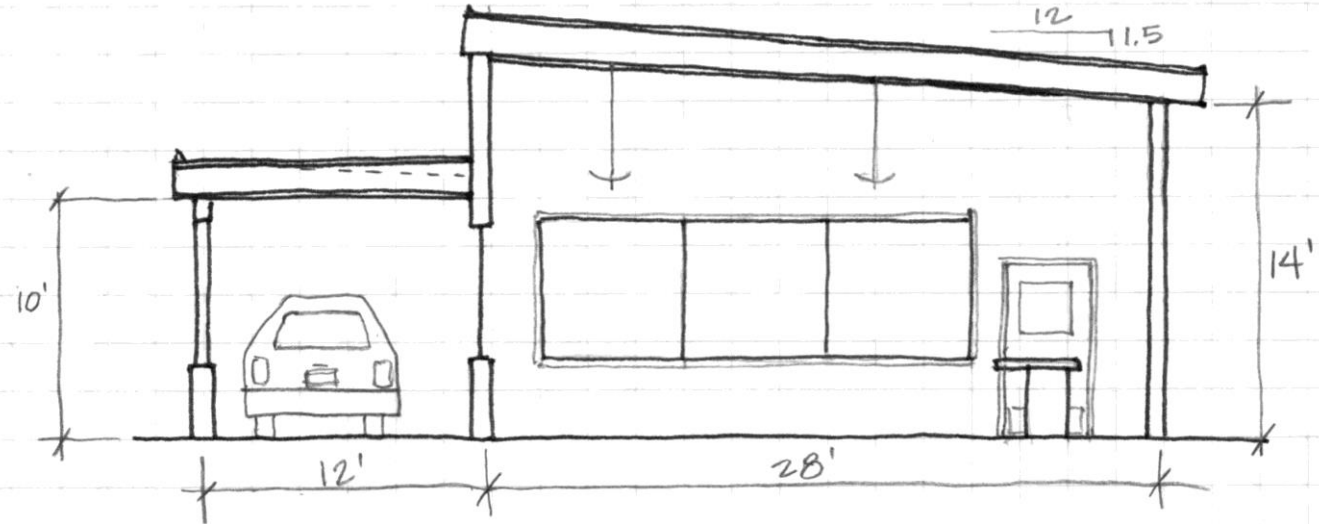
# Architectural Elements



# Terminal Concept



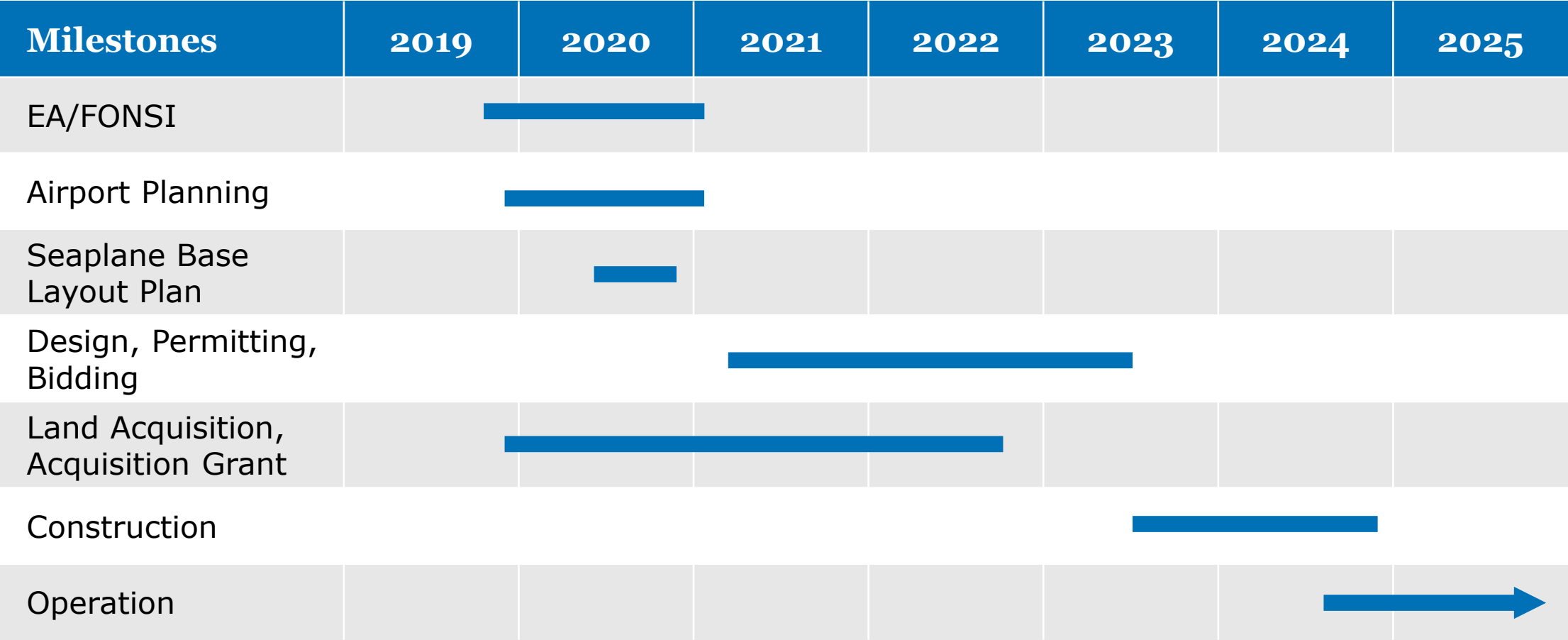
SITKA SEAPLANE BASE TERMINAL CONCEPT  
SCALE:  $\frac{1}{8}" = 1'-0"$   
4.20.22



A-A SITKA SEAPLANE BASE CONCEPT SECTION  
SCALE:  $\frac{1}{8}" = 1'-0"$   
4.20.22



# Overall Project Schedule



# What We Need From You

## QUESTIONNAIRE:

1. Security/Fence Location.
2. Design Vehicle for the dock.
3. Vehicle Circulation.
4. Time of Operation.
5. Potable Water.
6. Power.
7. Lighting.
8. Tie Downs.
9. Transient Float Layout
10. Fueling



# What We Need From You

Volunteers!

We need a working group to discuss future operations.

