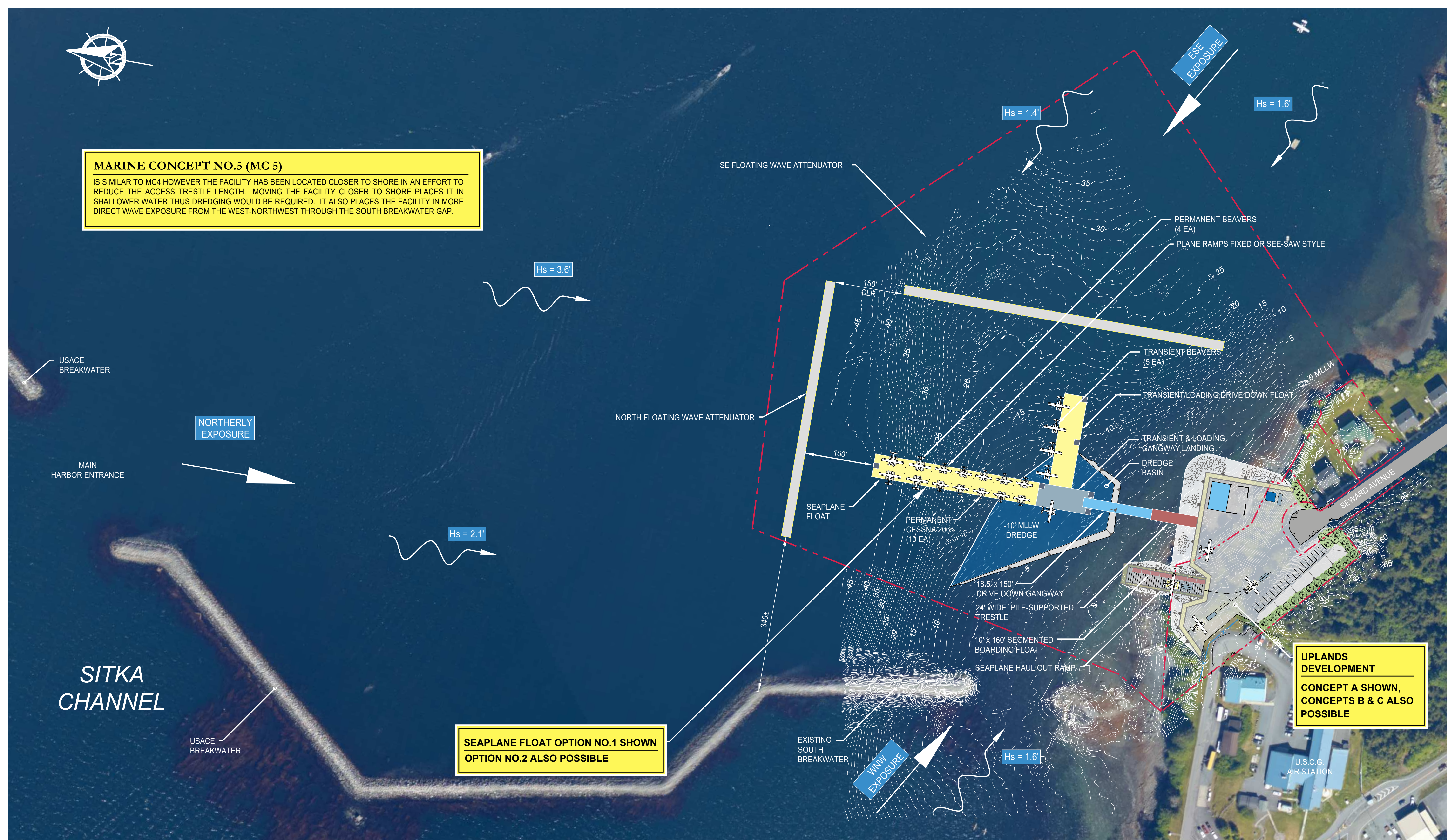


MARINE CONCEPT NO.5 (MC 5)

IS SIMILAR TO MC4 HOWEVER THE FACILITY HAS BEEN LOCATED CLOSER TO SHORE IN AN EFFORT TO REDUCE THE ACCESS TRESTLE LENGTH. MOVING THE FACILITY CLOSER TO SHORE PLACES IT IN SHALLOWER WATER THUS DREDGING WOULD BE REQUIRED. IT ALSO PLACES THE FACILITY IN MORE DIRECT WAVE EXPOSURE FROM THE WEST-NORTHWEST THROUGH THE SOUTH BREAKWATER GAP.



**SEAPLANE FLOAT OPTION NO.1 SHOWN
OPTION NO.2 ALSO POSSIBLE**

**UPLANDS DEVELOPMENT
CONCEPT A SHOWN,
CONCEPTS B & C ALSO POSSIBLE**



NOTES:
Hs = SIGNIFICANT WAVE HEIGHT 100 YEAR RETURN PERIOD
H_{MAX} = 1.7 x Hs

PND ENGINEERS, INC.
9360 Glacier Highway, Ste. 100
Juneau, Alaska 99801
Phone: 907-586-2093
Fax: 907-586-2099
www.pndengineers.com

DESIGN: CRS CHECKED: CRS SCALE: SCALE IN FEET
DRAWN: PJD APPROVED: CRS 0 100 200 FT.

DATE: MAY 15, 2020

SITKA SEAPLANE BASE

SHEET TITLE: **MARINE CONCEPT NO.5**

PND PROJECT NO.: 192082.01

MC 5